



## West Street Christian Fellowship – INFORMATION PACK

### CONTENTS

<b>1. Introduction .....</b>	<b>2</b>
<b>2. Our Town and Community .....</b>	<b>3</b>
<b>3. Our Focus .....</b>	<b>5</b>
<b>4. Our Values .....</b>	<b>6</b>
<b>5. Our Statement of Faith.....</b>	<b>9</b>
<b>6. Our History.....</b>	<b>11</b>
<b>7. Our Structure .....</b>	<b>12</b>
<b>8. Our (Pastoral) Life-Groups.....</b>	<b>15</b>
<b>9. Our Ministries .....</b>	<b>15</b>
<b>10. Community .....</b>	<b>16</b>
<b>11. Misson, buildings and safeguarding .....</b>	<b>17</b>



## 1. Introduction

Welcome to the life of West Street Christian Fellowship.

We are a church of approx. 107 and other regular attenders, based in Crewe – a town of 76,000 in the North West of England.

Our church family consists of people from many generations, different walks of life and varied backgrounds.

Together we seek to Love God, Build Family and Love Crewe.

This information pack is designed to give you an overview of who we are, what we do and how we do it.

We hope you enjoy finding out more about us here at West Street.



Heather Pritchard

(Senior Leader)



Graham Criddle

(Church leader)

[www.wscfchurch.com](http://www.wscfchurch.com)

Member of the Evangelical Alliance

West St Christian Fellowship – a Company Limited by Guarantee No 5124931

Registered Charity No 1107611



## **2. Our Town and Community**

### **2.1 INTRODUCTION TO CREWE**

Crewe originally grew up around the railways in the 19<sup>th</sup> century, firstly around the railway junction and then supplying workers to the railway “works”, making and maintaining engines.

The town has a strong industrial heritage not only with the railways, but also Rolls Royce and now Bentley, along with associated smaller businesses. In the last 10 years, we’ve seen growth in the Bentley site and an increase in the size and diversity of our business parks.

Crewe is renown as a transport hub, with many railway connections and the M6 just 5 miles away. We have excellent transport links to Manchester, Liverpool, Birmingham and London and the national parks of North Wales, the Lake District and the Peak District are all within easy travelling distance.

Crewe was set to benefit tremendously from planned investment in HS2 rail links, with thousands of new jobs and new homes being created. Alas that scheme was cancelled, but Crewe remains a strategic hub in the Northern Powerhouse Rail (NPR) discussions, which could still bring improved connectivity and economic benefits. The town’s existing rail infrastructure and freight capacity make it well-positioned to benefit from future upgrades and regional investment. Plans for redeveloping the town centre are coming together very slowly but for some time we have felt a sense of expectation that God is bringing change to Crewe and going to use Crewe as a hub for more than just trains! Exciting times!

As with many towns of our size (approx. 76,000 residents), the town is a diverse mixture of communities, with WSCF situated at the heart of a relatively deprived community in the older part of the town. This has helped to shape our identity and what we do, as we seek to express the love and truth of Jesus in this community.

Our members come from a broad range of communities across Crewe and neighbouring towns such as Nantwich and reflect the diversity of these communities in age and background.

Whilst Crewe is a town with an industrial heritage, we have green spaces, including our large Victorian park, Queen’s Park, which hosts many events including Park Run, Family days etc. We are also surrounded by countryside with an extended rural community and small villages.



### **2.2 THE CHURCH IN CREWE**

We are passionate about seeing Jesus build His Church, not just at West Street but across our town. Something special happens when we unite to worship and pray, so we are blessed to work with other churches as part of 'Churches Together in Crewe' and 'Love Crewe'.

**Churches Together in Crewe** meet quarterly to arrange joint services and arrange a number of joint projects during the year, including:

- Celebrations in the town around the Easter Weekend.
- Christmas dinner for those who would otherwise be alone on Christmas Day.
- Befriending Service.

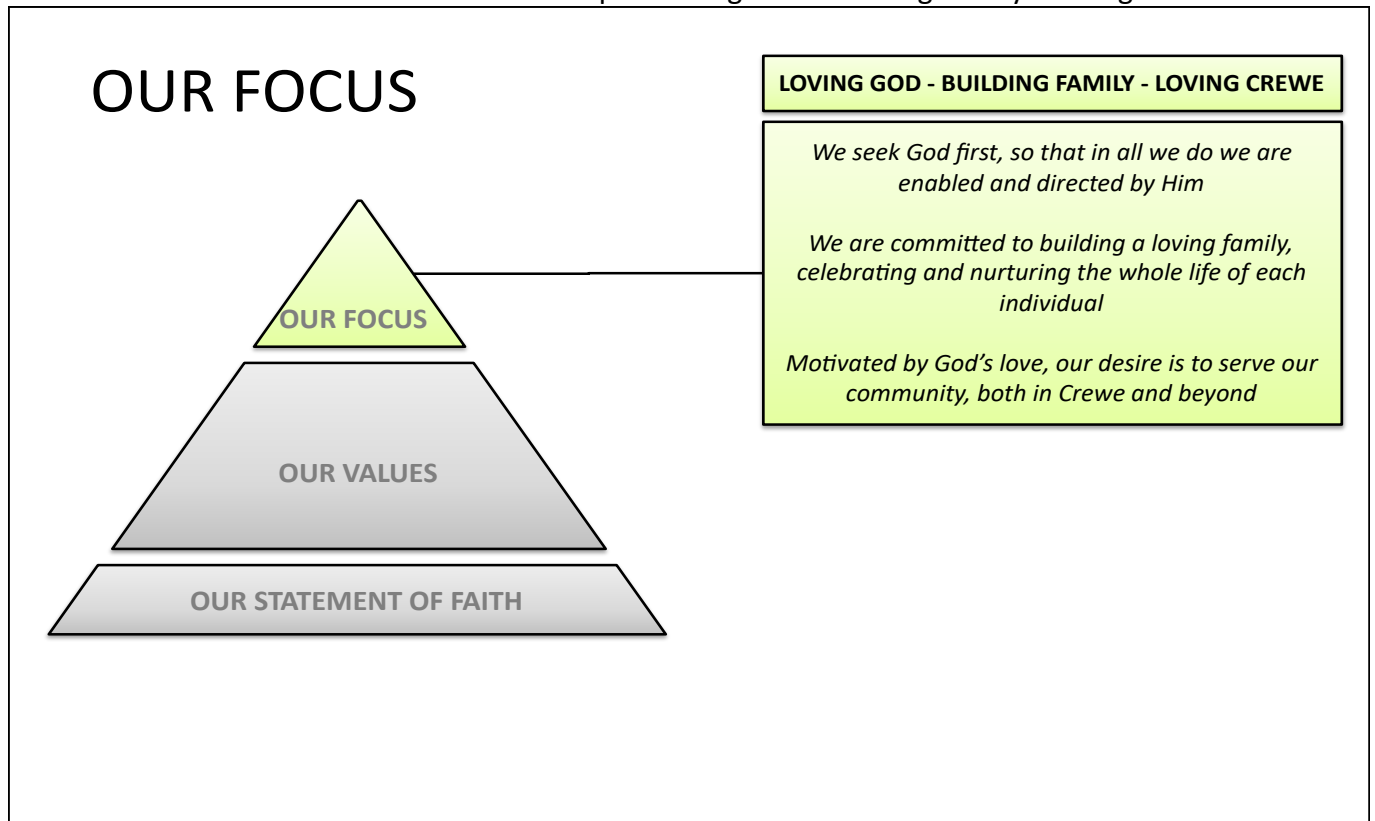
**Love Crewe** ([www.lovecrewe.co.uk](http://www.lovecrewe.co.uk)) - In 2016, 11 of the churches in Crewe came together to pray regularly for the town and to organise a week-long summer mission. We were so blessed and encouraged by working and praying together for this, that Love Crewe has continued, with Church leaders meeting regularly to pray and seek God together for the transformation of Crewe. Another week-long mission followed in 2017, along with some one-off events, including:-

- prayer meetings and prayer walks
- outreach into local high schools, working with Message trust team
- joint youth events
- joint Sunday services in the town park (Queen's Park)
- practical outreach projects, liaising with the local Council, improving parks and public spaces
- street evangelism
- evangelistic and healing meetings
- Alpha Courses



### 3. Our Focus

The FOCUS of West Street Christian Fellowship is: Loving God - Building Family - Loving Crewe



There are three main elements to OUR FOCUS:

#### **3.1 LOVING GOD**

We recognise that all we have and are is from God and that it is Jesus who builds His Church and advances His Kingdom. Without Him we can do nothing, but with Him we are more than conquerors and all things are possible.

So we seek God first in everything, seeking to know His truth for us, His heart for His church and our community, His direction for all that we do and His enabling and equipping so that everything that we do honours Him.

We want everything to begin with Him, be done through Him and for Him and to give Him glory.

#### **3.2 BUILDING FAMILY**

West Street is a diverse and varied family, consisting of people of all ages from many social and cultural backgrounds.

Together we are family, and our focus is to be on strengthening our family as individuals and in relationship with each other.

#### **3.3 LOVING CREWE**

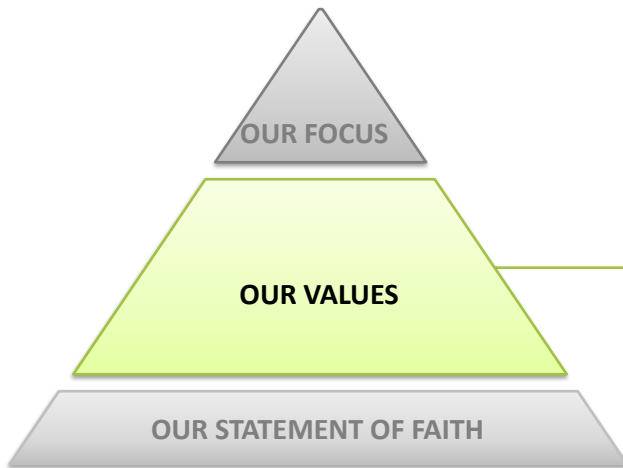
Our history and our future focus is to serve our community – the world outside the walls of the building.

As well as serving Crewe this also includes “serving from Crewe” – reaching out to Cheshire, the UK and overseas as God leads us.

### 4. Our Values

OUR VALUES, are to be our characteristics – the things that are to be apparent in the way we behave both together and apart as West Street People. They form the basis of our covenant as we live in family.

# OUR VALUES



*We seek God first, so that in all we do we are enabled and directed by Him.*

- **The Bible** – We believe in the authority of the Bible and will have faith to act upon it.
- **Prayer** – We will pray for each other, believe in the power of prayer and seek to hear God's voice
- **Holy Spirit** – We will desire to be filled with the Holy Spirit daily, displaying His fruits and moving in His gifts
- **Worship** – We will encourage a culture of worship in our day-to-day lives, which will overflow in our times together
- **Welcoming** – We seek to be warm and welcoming, accepting new people and valuing each other
- **Loving** – We will seek to forgive, prefer, honour and speak well of each other at all times
- **Nurturing** – We will encourage, support and help each other in fulfilling all that we are created to be in God
- **Outward looking** – We will work with the wider church to prioritise the needs of those who are not yet in God's Kingdom

## 4.1 THE BIBLE

We have a heritage of strong bible teaching that is challenging and relevant to our daily lives. While we have some fantastic teachers amongst us we want to encourage more people to explore this gift and invite other teachers to inspire and guide us through God's word.

Alongside this we want to encourage further development in private and corporate study and look at both equipping individual study and consider ways in which we can encourage each other to take more time throughout the week to delve into the word and gain a deeper understanding of God's heart

It is not just enough to know what the bible says. We are also committed to believing God's word and acting upon it, and through this seeing God's power in our lives.

## 4.2 PRAYER

Prayer is our life's breath, spending time with our Father, getting to know Him, listening to Him, pouring out our heart to Him. This is a priority and we know prayer changes things.

Over the generations, prayer has gone up from West Street and we have many faithful people with such a heart for prayer: to pray for each other, the Church and their community.

We encourage prayer as an individual and corporate priority: a culture of seeking God, praying for each other, praying for God's Kingdom to be advanced and expecting great things from God.

## 4.3 HOLY SPIRIT

In our history, the Holy Spirit has come in power in West Street, and we have been a church with an openness to the work of the Holy Spirit.

We desire in everything to be empowered by the Holy Spirit, exhibiting his fruit in our lives and moving in his gifts with love and wisdom.

As well as experiencing and partnering with the Holy Spirit as individuals, in the context of our services, our desire is for the Holy Spirit to move among us and for the gifts of the Holy Spirit to be exercised, that we minister to each other and handle the prophetic with honour.

#### **4.4 WORSHIP**

Over the years, West Street has been known as a place of lively, Spirit-filled worship. We are blessed with some great musical gifts, and as we move forward we are convinced that our worship is one of the keys in defining what sort of people we are.

We are to be a grateful people who give thanks in all circumstances and make the choice to worship in our day-to-day lives – in our homes, in our families, in our cars etc.

Our worship together is the spearhead of our spiritual battle and will enable us to have victory in the spiritual dimension – pushing back the powers of darkness in our town.

#### **4.5 WELCOMING**

While we seek to make everyone welcome, we recognise that welcoming has more implications than saying 'good morning' as people arrive on a Sunday! Our desire is to develop a nurturing and caring culture for all who come through our doors, and this requires everyone to be involved.

We are fully committed that our online presence should represent who we are, that church should always be a safe place, and that our welcome leads newcomers to integrate in life at West Street.

In our services, our desire is to prioritise the welcome that people feel: both newcomers and those who have been coming for many years.

#### **4.6 LOVING**

While there is a lot of love when we meet together, and we show God's love in many ways to our community, we recognise that we do not always meet the standard of loving one another.

Forgiveness will always be a key in our life together, and we are committed to honour and prefer one another, and speak well of others at all times.

We want to breed a culture that is of God, so that no matter who the other person is we can love well and demonstrate God's true love for us.

#### **4.7 NURTURING**

To nurture and make disciples of new believers is a key priority: to bring people in and help them develop their relationship with Jesus.

We also want to encourage and equip every believer to live for Christ every day and support each other to become more and more like Jesus in our families, schools, workplaces and neighbourhoods.

We recognise the many gifts in the fellowship, and that we are each fulfilled and stronger in our spiritual lives when we explore these gifts and are released to utilise them for the kingdom.

#### **4.8 OUTWARD LOOKING**

God has blessed us and enabled us to be a blessing to our community in so many ways – meeting people where they need it most.

Our key ministries have been founded with the community in mind. Over the years we have shown God's love to the children and youth in our town, with 5-Minus, Fusion, The Ark, our Schools' ministry, Impact and many other amazing children and youth ministries....

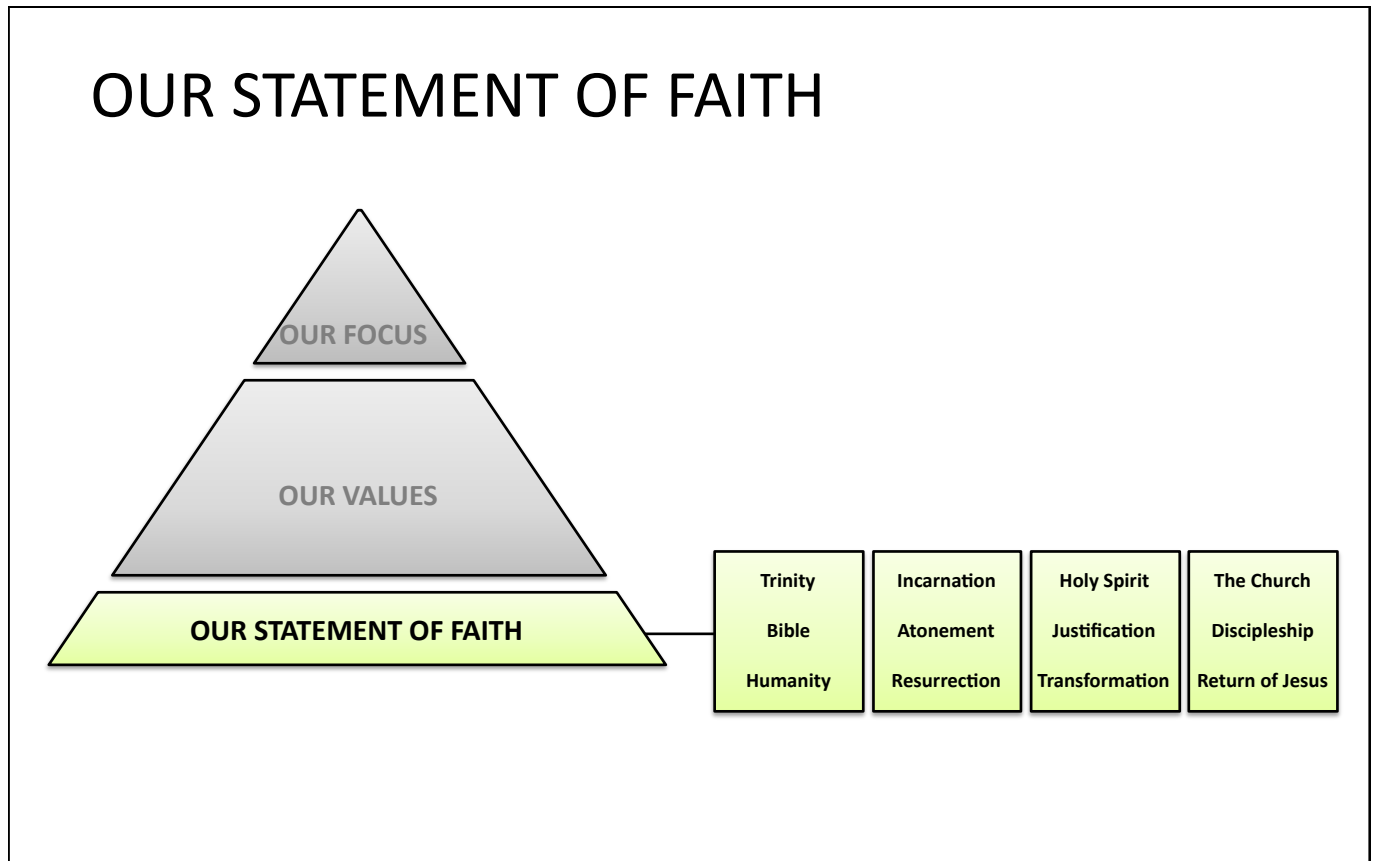
We have been blessed with an amazing team working with the poor, those in debt – specifically through CAP but also through work with the homeless and in food distribution.

Many ministries have been birthed in this place which prioritise the needs of those not yet in God's Kingdom – including meeting the needs of the older or isolated members of our community through 'Friendship Hub'.

Over the years, many Missionaries, teams and direct gifts have gone out around the world from WSCF, to help the poor and those not yet in God's Kingdom. The call to world mission has always been a key part of who we are.

With the founding of LOVE CREWE we have committed to reaching our town with God's love, in partnership with other Crewe congregations. This has reminded us of the power that comes through unity in the wider church in our town working together to advance God's Kingdom.

## 5. Our Statement of Faith



Our Statement of Faith, contained in our Memorandums and Articles of Association, is as follows:

We believe in:

- 1) The one true God who lives eternally in three persons – the Father, the Son and the Holy Spirit.
- 2) The love, grace and sovereignty of God in creating, sustaining, ruling, redeeming and judging the world.
- 3) The divine inspiration and supreme authority of the Old and New Testament Scriptures, which are the written Word of God – fully trustworthy for faith and conduct.
- 4) The dignity of all people, made in God’s image to love, be holy and care for creation, yet corrupted by sin, which incurs divine wrath and judgement.
- 5) The incarnation of God’s eternal Son, the Lord Jesus Christ – conceived of the Holy Spirit, born of the virgin Mary; truly divine and truly human, yet without sin.
- 6) The atoning sacrifice of Christ on the cross: dying in our place, paying the price of sin and defeating evil, so reconciling us with God.
- 7) The bodily resurrection of Christ, the first fruits of our resurrection; his ascension to the Father, and his reign and mediation as the only Saviour of the world.
- 8) The justification of sinners solely by the grace of God through faith in Christ.
- 9) The ministry of God the Holy Spirit, who leads us to repentance, unites us with Christ through new birth, empowers our discipleship and enables our witness.

10) The church, the body of Christ both local and universal, the priesthood of all believers — given life by the Spirit and endowed with the Spirit's gifts to worship God and proclaim the gospel, promoting justice and love.

11) The personal and visible return of Jesus Christ to fulfil the purposes of God, who will raise all people to judgement, bring eternal life to the redeemed and eternal condemnation to the lost, and establish a new heaven and new earth.

## **6. Our History**

It all began in the heady days of the 1840's when due to the railways there was a massive expansion of the 'new town' of Crewe.

The battle was on to establish a 'Baptist church', with few members but willing spirits. In 1895, a piece of land was bought on the corner of Richard Street and West Street and in November, the West Street Baptist School Chapel was erected on site.

Shortly after 1971, the church left the Baptist Union along with many other Baptist churches. In 1973, Rev. Geoffrey Willetts was invited to fill the vacant pulpit for one Sunday only. However, his ministry continued and within this time, major changes occurred to both buildings, membership growth and a greater acceptance of the ministry of the Holy Spirit. The vision for West Street to serve the community and be a place that is open throughout the week was realised during this time. Geoffrey retired in 2008, and the church then had a number of years of interregnum.

Rev. Peter Davies took up the role of Senior Pastor in 2011 during which time our newest building The Maybury Centre was opened. This enabled further development to serve the community including establishing a 'Christians against poverty' (CAP) debt centre. Peter resigned in 2015.

Between January and May 2016, a leadership team were elected and during that time, the church saw a development of body ministry and individuals recognising their giftings in teaching, pastoral ministry, worship and many others.

Graham Criddle was appointed as Senior leader in 2019 and was such a 'God-send' when covid hit and Graham's IT skills were called for! Graham retired at the end of March 2025 and Heather Pritchard has been appointed as Senior Leader.

Our desire is to grow the Leadership Team to reflect the 5-fold ministry referred to in Ephesians 4:11.

The church, still known by many in the community as 'the Baptist Church', is based in the west end of Crewe, although it continues to attract members from a wider area of South Cheshire. The church changed its name to West Street Christian Fellowship when it became a charitable company. We are an independent church, a member of the Evangelical Alliance and a 'Family church' in the network, Kairos Connexions.

## 7. Our Structure

### 7.1 LEARNING FROM WEAVING

We are all weak individuals, but together we are woven together to create something that is much larger, stronger and more beautiful than any of us could be on our own.

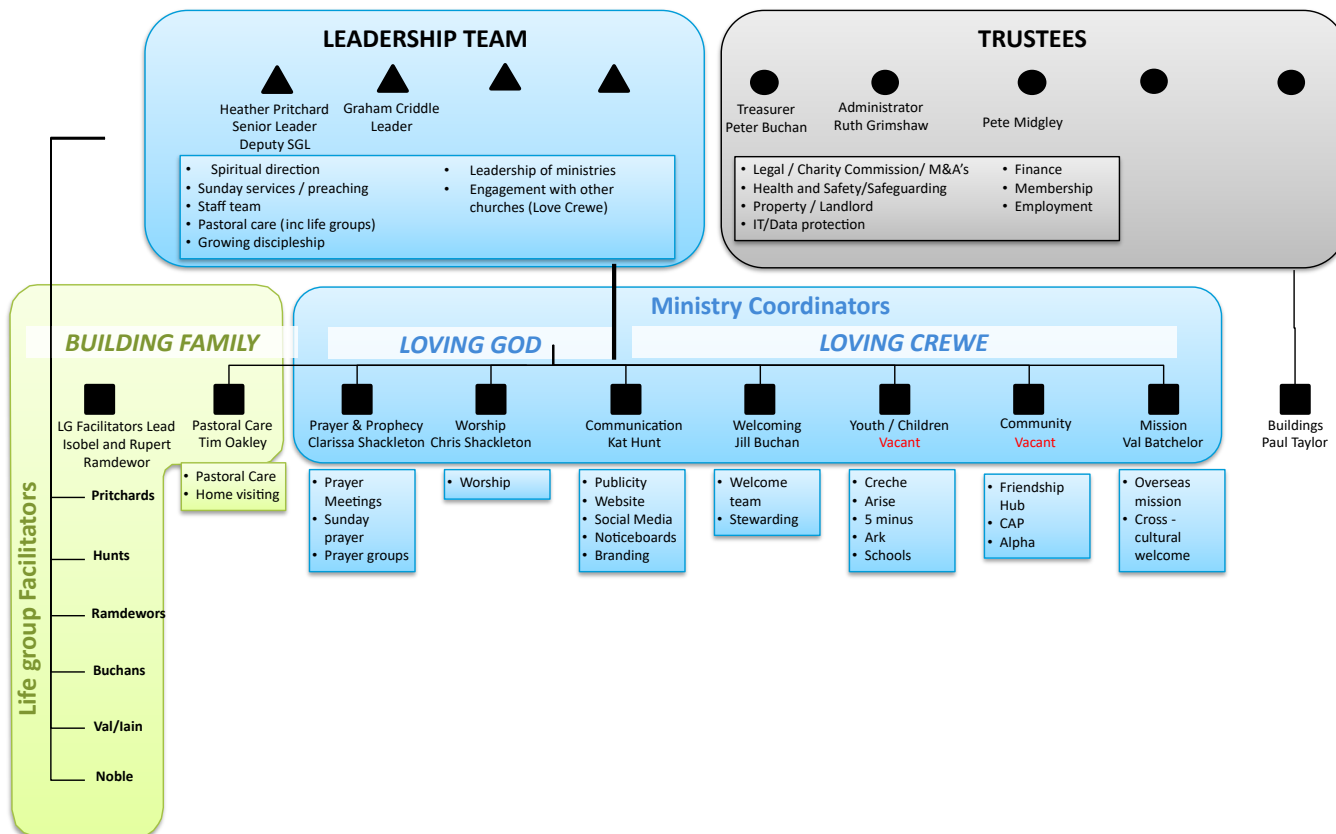
Weaving requires us each to be stretched to support others and bend to their needs.

The warp and the weft are equally important and give us strength – every one of us should have multiple connections and not just be aligned with one group or point of view.



Our structure is inspired by the weaving example, and the following principles:

- Team leadership
- Separate trustee and leader responsibilities
- Leaders appointed for every ministry area
- Pastoral care via Life groups and 1:1 visiting
- Every member and attender woven into the life of the church through connections with pastoral care and church ministries



## **7.2 LEADERSHIP, ADMIN, TRUSTEES**

The leadership team is based on a team leadership approach, with the Senior Leader (paid) and volunteer leaders serving alongside each other. The leaders meet regularly and hold spiritual responsibility for the direction of the fellowship, teaching, pastoral care and leadership of the ministries.

The trustees are a separate body, but also church members, who hold the legal responsibility for West Street as a charity, in addition to responsibility for property, safeguarding, health and safety etc. They are also the official employer of the paid staff.

The leaders, trustees and administrators meet monthly to pray and jointly make key decisions that affect the life of the fellowship; close collaboration and communication is key to us working together.

## **7.3 MINISTRY COORDINATORS**

Ministry leaders are responsible for the various ministry areas of West Street. They coordinate activities in their area in conjunction with a team who ensure every area is covered.

Each ministry leader has a direct point of contact for communication with the leadership team

## **7.4 PASTORAL LEADERS**

Life groups are the primary link for pastoral care for nurturing and discipleship. Our Life groups are mostly led by a couple of pastoral leaders.

Our pastoral care requires development to ensure that all who attend the church have support when required.

Ministry and pastoral leaders have regular opportunities to meet with the leadership team, both together and separately, for prayer and sharing of priorities and issues together.

### **7.5 Support Structures**

Over the past 8 years the leadership team has worked closely with David King (Director of Kingdom Voice, Salford, GATHER Movement ambassador in the North of England) and he and his wife Karen continue to be our Senior Leader's spiritual mentors. He is also available to run our staff meetings and he meets with the Leaders and Trustees at various times in the year.

We have recently become a 'Family Member' of Kairos connexions, <https://kairosconnexion.org>. This enables the leaders in our church to access conferences, resources and 1:1 conversations with people who are in the business of thinking about the church being relevant in the 21<sup>st</sup> century.

### **7.6 MEMBERSHIP AND DECISION MAKING**

Church services and meetings are open to the public. Church membership, is open to anyone who professes a genuine Christian faith, can agree to the church statement of faith, is at least 18 years old and has been baptised. Baptism is very meaningful for people who have recently become Christians, but the rule has been problematic for people joining the Church from other denominations that don't practice baptism by total immersion. We recently changed our constitution so that established Christians from a different background can join without this requirement.

West Street operates a congregational decision making model, where a member vote takes place on key decisions including staff appointments and significant financial outlay.

The current leaders and trustees have worked hard with the members to ensure extensive consultation, involvement and alignment before any vote, so that voting can be used primarily as a confirmation process.

### **7.7 LEGAL STATUS**

West Street Christian Fellowship is a registered charity, and also currently a Company Limited by Guarantee.

## **8. Our (Pastoral) Life Groups**

Life groups form a network from which pastoral care can be initiated. We currently have 5 Life groups that function by meeting at various times in the week. They largely happen in a home setting which gives a good place to strengthen relationships, enjoy each other's company, share our faith, study the Bible, pray, and have fun – and often food - together.

### **8.1 PASTORAL CARE**

As stated in our structure model, our pastoral care at present falls under two main categories. The Pastoral team make emergency visits to those who have immediate needs and to the elderly, sick or bereaved. Tim Oakley heads up a small team who engage with these visits.

## **9. Our Ministries**

WSCF is a very busy church as people recognise needs in our local community and are encouraged to worship God with the gifts he has given them.

### **9.1 PRAYER**

It is our desire that prayer becomes our life's breath and is woven into all that we do at WSCF. We have a team to coordinate prayer activities at West Street, including:

- Sunday morning (0930) prayer meetings
- Regular prayer slots in the Sunday services
- Prayer ministry after Sunday services
- Monthly prayer meetings for the congregation to attend.
- In depth 1:1 prayer ministry, including healing & deliverance
- Love Crewe Prayer - for our town with the other Love Crewe congregations

### **9.2 WORSHIP**

- **WORSHIP**: We see worship as family...relationship with God, relationship with each other and seeking God together. It's in that place we want to see God move, potential released, people healed, miracles, chains broken, joy expressed, forgiveness and the list continues!! Isaiah 62v10- As we worship we are preparing the way for the people, we are opening up 'the highway' through our praise to Him and clearing a way for God to do what he wants to do. We are blessed to have musicians among us which form our worship band on a Sunday.

### **9.3 COMMUNICATION**

At present, Kat Hunt heads up our communications ministry. Through her expertise in graphic design, Kat has worked hard at improving our interior as well as the continuity in what the community see. There is still much to do!

### **9.4 WELCOMING**

A team of volunteers, led by Jill Buchan greets members and visitors as they arrive. They have a welcome leaflet with a QR link to our website readily available and another team provide refreshments before the service.

### **9.5 CHILDREN, YOUTH AND YOUNG ADULTS**

Under the leadership of various volunteer leaders, WSCF Youth and Children seeks to help children and young people meet Jesus and fulfil their God-given potential.

It has been key in building relations with families in our church and in our local community over many years through different groups.

Key 0-18 activities include:

## PRE-SCHOOL

- 5 MINUS (0-4 years): Mondays to Thursdays Term time 10.00 – 12.00. 5 Minus is a warm and welcoming place for both pre-school children and their parents and carers. Our wonderful team provide a variety of toys, activities, stories and songs for all to enjoy. Refreshments are available for adults; snacks and drinks are provided for the children.

## PRIMARY AGE-GROUP

- THE ARK (Primary Age): Christmas, Easter & Summer Holidays Daytime. The Ark is a fabulous holiday club that has been running for nearly 30 years! During the Ark we have church time, including worship, teaching and prayer. Followed by workshops, messy games, joke and talent and a whole lot more!
- SCHOOL'S WORK LOCAL SCHOOLS (Primary Age): Term Time in local schools. Our senior leader, Heather is involved in teaching RE, leading worship, running lunch time clubs and special assemblies.

## Sunday activities

- Arise: a brand new group for our children and young people from 0-18 on the 3rd,4th and 5<sup>th</sup> Sunday of each month. After joining the whole church together for worship, this age group will gather in the Christian Centre and after sharing a Bible story together will split into relevant age groups for more discussion, craft or play.

## **10. COMMUNITY**

### **10.1 Friendship hub**

This is a more recent ministry that has grown because of the number of elderly members within the congregation and the growing population in our community.

- Meet every Friday with friends to compete in games, quizzes and craft activities or just enjoy a chat and coffee. We also include light physical exercise, manicures, massage and some musical activities. In Christian Centre next to the Church, on Richard Street.

### **10.2 CHRISTIANS AGAINST POVERTY:**

Here at WSCF we run a thriving CAP Debt Centre, employing 2 Debt Coaches one of whom is the Centre manager. Last year we saw 25 families become debt free but many others also experiencing hope in their lives, whether financially or spiritually! CAP is a wonderful expression of God's love in action; meeting people in their own homes who are struggling and bringing them hope.

### **10.3 BOOK SHOP:**

The bookshop is located in the reception area of the Maybury Centre. There is a range of Christian literature available including Bibles, cards for different occasions and small gifts available for purchase.

### **10.4 OUTREACH**

Much of our outreach is done in connection with 'Love Crewe'. We see outreach as a combination of practical expressions of love for our town and street evangelism. Following these events we have joined together with other churches in the town to run a number of Alpha courses. However, at present, Alpha courses are being run separately in each church.

## **11 MISSION**

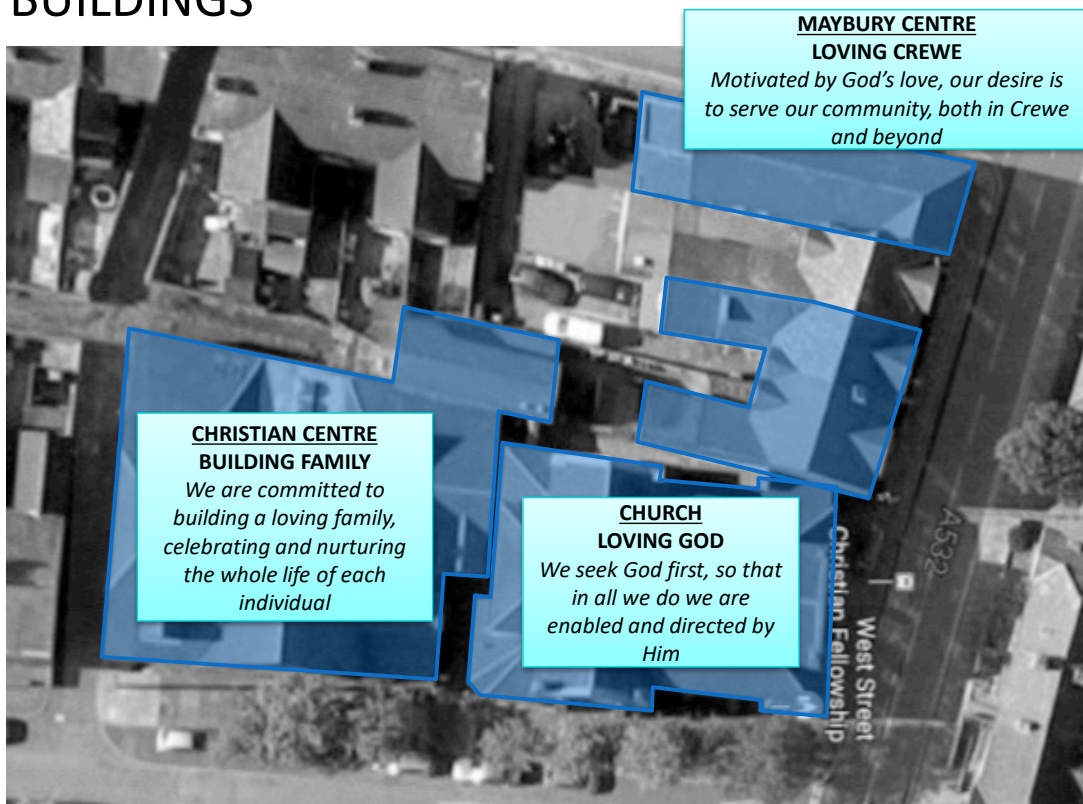
- **OVERSEAS MISSION:** We have three overseas and one UK-based missionary that we support prayerfully and financially. In addition, within West Street we have very active founding members of two key charities with impact in Africa: Africa Christian Teaching Services (ACTS) and Flame International. Mission is a key area for our fellowship. As well as dedicating 10% of our annual budget to mission, we actively promote overseas mission opportunities, both long and short term with the aim of encouraging all age groups to be involved.
- **CROSS-CULTURAL WELCOME:** We are a congregation that welcome people from all nationalities. We are blessed to have a number of folk from different countries that have made Crewe their home. Our desire is to become even better at celebrating the cross-cultural diversity represented at WSCF.

### **11.1 BUILDINGS**

West Street currently owns a large amount of property in the West end of Crewe, specifically:

- **CHURCH BUILDINGS:** primary focus – LOVING GOD – Sunday services etc
- **CHRISTIAN CENTRE:** primary focus – BUILDING FAMILY – used primarily for children, youthwork and friendship hub.
- **MAYBURY CENTRE:** Maybury Centre – primary focus – LOVING CREWE – a base for our offices including CAP, schools worker and coffee shop
- **TWO SHOPS WIITH FLATS ABOVE:** these are currently rented out to and provide income including a nursery and a local shop

## **WSCF BUILDINGS**



## **11.2 SAFEGUARDING**

There are many aspects to building a healthy culture, a family of people who care for each other, and one of them is having things in place for when something goes wrong.

As a church we are committed to the proper safeguarding of children and adults at risk of harm. This is something the church leadership (both leaders and trustees) are fully committed to, and each person in the church recognises their responsibility to help prevent abuse and to report any abuse they become aware of. This is done through the CPOMS system.

We have a safeguarding lead, Ruth Brehaut, who acts as the coordinator for this and is the first person to contact with any concerns.

To get in touch, either email [safeguarding@wscfchurch.com](mailto:safeguarding@wscfchurch.com) or call 07954 734735.

We also have a safeguarding policy that documents:

- Our commitment to safeguarding
- Steps we have taken to try to prevent abuse
- How we respond to allegations of abuse
- How we provide pastoral care to those who have been abused, as well as to those who have been involved in abuse or may be a risk to others

A copy of this policy document is available on request.

We also have a whistleblowing policy showing how people within the church community can raise any concerns they have about activities that are taking place. This policy allows for concerns to be raised in confidence and commits to a correct and thorough investigation and resolution of the issue.

A copy of this policy document is also available on request.

We have also adopted a healthy culture policy that speaks about our commitment to being a community where everyone knows they are valued, respected, and treated appropriately. And also a community where we encourage and challenge each other to grow to be more like Jesus.