



SENIOR LEADER

Information Pack

Salary

£30,000-35,000

Permanent Position

Start date

Negotiable (preferably Q1-2019)

Closing date for applications

12th October 2018



CONTENTS OF DOCUMENT

Please click a link below to go to a section

[Introduction >](#)

[Our Town and Community >](#)

[Our Focus >](#)

[Our Values >](#)

[Our Statement of Faith >](#)

[Our History >](#)

[Our Structure >](#)

[Our \(Pastoral\) House Groups >](#)

[Our Ministries >](#)



INTRODUCTION

Welcome to the life of West Street Christian Fellowship.

We are a church of approx. 160 members plus children and other regular attenders, based in Crewe – a town of 85,000 in the North West of England.

Our church family consists of people from many generations, different walks of life and varied backgrounds.

Together we seek to Love God, Build Family and Love Crewe.

This information pack is designed to give you an overview of who we are, what we do and how we do it.

We hope you enjoy finding out more about us here at West Street.

WSCF LEADERS



Heather Pritchard



Andy Lewis



Janet Taylor

www.wscfchurch.com

Member of the Evangelical Alliance

West St Christian Fellowship – a Company Limited by Guarantee No 5124931

Registered Charity No 1107611



OUR TOWN AND COMMUNITY

INTRODUCTION TO CREWE

Crewe originally grew up around the railways in the 19th century, firstly around the railway junction and then supplying workers to the railway “works”, making and maintaining engines.

The town has a strong industrial heritage not only with the railways, but also Rolls Royce and now Bentley, along with associated smaller businesses. In the last 10 years, we’ve seen growth in the Bentley site and an increase in the size and diversity of our business parks.

Crewe is renown as a transport hub, with many railway connections and the M6 just 5 miles away. We have excellent transport links to Manchester, Liverpool, Birmingham and London and the national parks of North Wales, the Lake District and the Peak District are all within easy travelling distance.

Our status as a transport hub is due to develop significantly over the next 10 years with HS2 Phase 2A establishing Crewe as an HS2 hub. The council are predicting major growth in the local economy, expecting over 30,000 new jobs and 7,000 new homes. Work has already begun on some improvements to infrastructure, new homes and land being ear-marked as business and industrial parks. A radical town centre redevelopment is also being discussed. There is an increasing sense of expectation that God is bringing change to Crewe and going to use Crewe as a hub for much more than just trains! Exciting times!

As with many towns of our size (approx 85,000 residents), the town is a diverse mixture of communities, with WSCF situated at the heart of a relatively deprived community in the older part of the town. This has helped to shape our identity and what we do, as we seek to express the love and truth of Jesus in this community. There is a significant Eastern European population, predominantly Polish, but less diversity across other ethnic groups.

Our members come from a broad range of communities across Crewe and neighbouring towns such as Nantwich and reflect the diversity of these communities in age and background.

Whilst Crewe is a town with an industrial heritage, we have green spaces, including our large Victorian park, Queen’s Park, which has recently started running Park Run events. We are also surrounded by countryside with an extended rural community and small villages.



THE CHURCH IN CREWE

We are passionate about seeing Jesus build His Church, not just at West Street but across our town. Something special happens when we unite to worship and pray, so we are blessed to work with other churches as part of Churches Together in Crewe and Love Crewe.

Churches Together in Crewe arranges a number of joint projects during the year, including:

- Good Friday Passion Play in the town centre.
- Christmas & Easter plays arranged by our schools workers and performed in churches around the town to over 1000 children from local primary schools.
- Homeless night shelter for several weeks each winter, in conjunction with the YMCA.
- Christmas dinner for those who would otherwise be alone on Christmas Day.

We are also currently working with the local police and the Ascension Trust with a view to setting up a Street Pastors project.

Love Crewe - In 2016

11 of the churches in Crewe came together to pray regularly for the town and to organise a week-long summer mission. We were so blessed and encouraged by working and praying together for this that Love Crewe has continued, with Church leaders meeting regularly to pray and seek God together for the transformation of Crewe. Another week-long mission followed in 2017, along with some one-off events, including:-

- Prayer meetings and prayer walks
- Outreach into local high schools, working with Message bands such as Brightline and Vital Signs
- Joint youth events
- family and youth events in the town park (Queen's Park)
- Practical outreach projects, liaising with the local Council, improving parks and public spaces
- Street evangelism
- Evangelistic and healing meetings
- Alpha Courses

In December 2018 we are hosting J John at a community carol service that will be held in the town's Lyceum Theatre.





OUR FOCUS

The **FOCUS** of West Street Christian Fellowship is: **Loving God - Building Family - Loving Crewe**

OUR FOCUS



There are three main elements to OUR FOCUS:

LOVING GOD

We recognise that all we have and are is from God and that it is Jesus who builds His Church and advances His Kingdom. Without Him we can do nothing, but with Him we are more than conquerors and all things are possible.

So we seek God first in everything, seeking to know His truth for us, His heart for His church and our community, His direction for all that we do and His enabling and equipping so that everything that we do honours Him.

We want everything to begin with Him, be done through Him and for Him and to give Him glory.

BUILDING FAMILY

West Street is a rich and varied family, consisting of people of all ages from many social and cultural backgrounds.

Together we are family, and our focus is to be on strengthening our family as individuals and in relationship with each other.

LOVING CREWE

Our history and our future focus is to serve our community – the world outside the walls of the building.

As well as serving Crewe this also includes “serving from Crewe” – reaching out to Cheshire, the UK and overseas as God leads us.



OUR VALUES

OUR VALUES are the things that are important for us - the things we value.

They are to be our characteristics – the things that are to be apparent in the way we behave both together and apart as West Street People. They form the basis of our covenant as we live in family.

OUR VALUES



We seek God first, so that in all we do we are enabled and directed by Him.

- **The Bible** – We believe in the authority of the Bible and will have faith to act upon it.
- **Prayer** – We will pray for each other, believe in the power of prayer and seek to hear God's voice
- **Holy Spirit** – We will desire to be filled with the Holy Spirit daily, displaying His fruits and moving in His gifts
- **Worship** – We will encourage a culture of worship in our day-to-day lives, which will overflow in our times together
- **Welcoming** – We seek to be warm and welcoming, accepting new people and valuing each other
- **Loving** – We will seek to forgive, prefer, honour and speak well of each other at all times
- **Nurturing** – We will encourage, support and help each other in fulfilling all that we are created to be in God
- **Outward looking** – We will work with the wider church to prioritise the needs of those who are not yet in God's Kingdom

THE BIBLE

We have a heritage of strong bible teaching that is challenging and relevant to our daily lives. While we have some fantastic teachers amongst us we want to encourage teaching gifts and invite other teachers to inspire and guide us through God's word.

Alongside this we want to encourage further development in private and corporate study and look at both equipping individual study and consider ways in which we can encourage each other to take more time throughout the week to delve into the word and gain a deeper understanding of God's heart

It is not just enough to know what the bible says. We are also committed to believing God's word and acting upon it, and so seeing God's power in our lives.

PRAYER

Prayer is our life's breath, spending time with our Father, getting to know Him, listening to Him, pouring out our heart to Him. This is a priority and we know prayer changes things.

Over the generations prayer has gone up from West Street and we have many faithful people with such a heart for prayer: to pray for each other, the Church and their community.



We encourage prayer as an individual and corporate priority: a culture of seeking God, praying for each other, praying for God's Kingdom to be advanced and expecting great things from God.

HOLY SPIRIT

In our history the Holy Spirit has come in power in West Street, and we have been a church with an openness to the work of the Holy Spirit.

We desire in everything to be empowered by the Holy Spirit, exhibiting his fruit in our lives and moving in his gifts with love and wisdom.

As well as experiencing and partnering with the Holy Spirit as individuals, in the context of our services, our desire is for the Holy Spirit to move among us and for the gifts of the Holy Spirit to be exercised, that we minister to each other and handle the prophetic with honour.

WORSHIP

Over the years West Street has been known as a place of lively, Spirit-filled worship. We are blessed with some great musical gifts, and as we move forward we are convinced that our worship is one of the keys in defining what sort of people we are

We are to be a grateful people who give thanks in all circumstances and make the choice to worship in our day-to-day lives – in our homes, in our families, in our cars.

Our worship together is the spearhead of our spiritual battle and will enable us to have victory in the spiritual dimension – pushing back the powers of darkness in our town.

WELCOMING

While we seek to make everyone welcome we recognise that welcoming has more implications than saying 'good morning' to people when they arrive. Our desire is to develop a nurturing and caring culture for all who come through our doors, and this requires everyone to be involved.

We are fully committed that our online presence should represent who we are, that church should always be a safe place, and that our welcome leads newcomers to integrate in life at West Street.

In our services our desire is to prioritise the welcome that people feel: both newcomers and those who have been coming for many years.

LOVING

While there is a lot of love when we meet together, and we show God's love in many ways to our community, we recognise that we do not always meet the standard of loving one another.

We want to breed a culture that is of God, so that no matter who the other person is we can love well and demonstrate God's true love for us



Forgiveness will always be a key in our life together, and we are committed to honour and prefer one another, and speak well of others at all times.

NURTURING

To nurture and make disciples of new believers is a key priority: to bring people in and help them develop their relationship with Jesus.

We also want to encourage and equip every believer to live for Christ every day and support each other to become more and more like Jesus in our families, schools, workplaces and neighbourhoods.

We recognise the many gifts in the fellowship, and that we are each fulfilled and stronger in our spiritual lives when we explore these gifts and are released to utilise them for the kingdom.

OUTWARD LOOKING

God has blessed us and enabled us to be a blessing to our community in so many ways – meeting people where they need it most.

Our key ministries have been founded with the community in mind, including the Christian Centre, the Maybury Centre and our bookshop and coffee shop ministries

Over the years we have shown God's love to the youth in our town, with 5-minus, Fusion, The Ark, our Schools' Ministry, Impact and many other amazing youth ministries....

We have been blessed with an amazing team working with the poor, those in debt – specifically through CAP but also through work with the homeless and in food distribution.

Many ministries have been birthed in this place which prioritise the needs of those not yet in God's Kingdom – including the seniors ministry to meet the needs of the older members of our community.

Over the years many missionaries, teams and direct gifts have gone from WSCF to various parts of the world to help the poor and those not yet in God's Kingdom. The call to world mission has always been a key part of who we are.

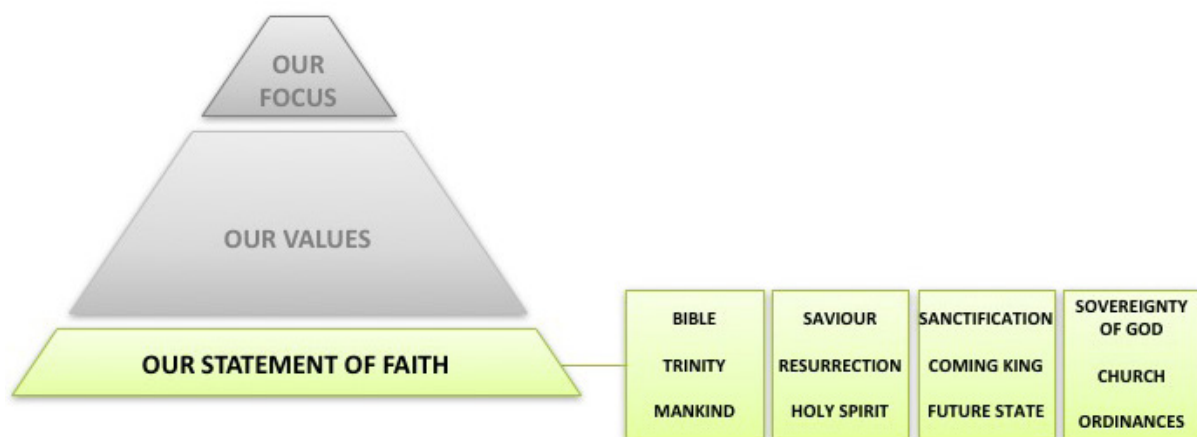
With the more recent founding of Love Crewe we have committed to reaching our town with God's love, in partnership with other Crewe congregations. This has reminded us of the power that comes through unity in the wider church in our town working together to advance God's Kingdom.



OUR STATEMENT OF FAITH

West Street Christian Fellowship is a member of the Evangelical Alliance, and as such we subscribe to the EA basis of faith.

OUR STATEMENT OF FAITH



Our Statement of Faith, contained in our Memorandums and Articles, is as follows:

THE BIBLE

The divine inspiration and infallibility of Holy Scripture as originally given, and its sole authority in all matters of faith and conduct.

THE TRINITY

One God, who is Holy love, eternally existing in Three persons as the Father, the Son and the Holy Spirit.

MANKIND

The universal sinfulness and guilt of human nature since the Fall rendering man subject to God's wrath and condemnation and without hope of salvation in himself.

THE SAVIOUR

The Lord Jesus Christ, the eternal Son of God, who at His incarnation was conceived of the Holy Spirit and born of the Virgin Mary, by Whose death as our representative and Substitute redemption from sin's guilt and penalty is secured for the elect.

RESURRECTION

The bodily resurrection of Jesus Christ from the dead, and his ascension to the right hand of God.



THE HOLY SPIRIT

The necessity of the work of the Holy Spirit to make the death of Christ effective to the individual sinner, granting him repentance toward God and faith toward our Lord Jesus Christ.

SANCTIFICATION

The continuing work of the Holy Spirit in the life of the believer to bring him at the last to be conformed to the image of God's Son.

THE COMING KING

The personal return of the Lord Jesus Christ at the end of the age Who at His coming shall raise the just to the resurrection of life and the unjust to the resurrection of condemnation.

THE FUTURE STATE

The eternal blessedness in Heaven of all who have been redeemed by the precious blood of Jesus.

SOVEREIGNTY OF GOD

The sovereignty of God in Redemption, Creation, Revelation and Final Judgement, who works all things after the counsel of His own Will.

THE CHURCH

The one holy universal Church which is the Body of Christ, and to which all true believers belong. Each local Church being a gathered community of believers living in fellowship with other believers within the body of Christ, and having liberty, under the guidance of the Holy Spirit, to interpret and administer His laws.

THE ORDINANCES

The ordinances of Believers Baptism and the Lord's Supper as ordained by Our Lord, and interpreted by the words of institution, the practice of the Apostles and the teaching of the New Testament.



OUR HISTORY

It all began in the heady days of the 1840's when due to the railways there was a massive expansion of the 'new town' of Crewe.

The battle was on to establish a 'Baptist church', with few members but willing spirits. In 1895, a piece of land was bought on the corner of Richard Street and West Street and in November, the West Street Baptist School Chapel was erected on site.

Shortly after 1971, the church left the Baptist Union along with many other Baptist churches. In 1973, Rev. Geoffrey Willetts was invited to fill the vacant pulpit for one Sunday only. However, his ministry continued and within this time, major changes occurred to both buildings, membership growth and a greater acceptance of the ministry of the Holy Spirit. The vision for West Street to serve the community and be a place that is open throughout the week was realised during this time. Geoffrey retired in 2008, and the church then had a number of years of interregnum.

Rev. Peter Davies took up the role of Senior Pastor in 2011 during which time our newest building The Maybury Centre was opened. This enabled further development to serve the community including establishing a 'Christians against poverty' (CAP) debt centre. Peter resigned in 2015.

Between January and May 2016, the current leadership team were elected. Since then, the church has seen a development of body ministry and individuals recognising their giftings in teaching, pastoral ministry, worship and many others. There has also been a definite move of the Spirit giving us a passion to work closely with other Churches in the town. 'Love Crewe' was born out of that and as a result we meet regularly with leaders from other churches in Crewe to pray and seek God together. We have been involved with mission weeks and evangelistic events to bless our town.

The church, still known by many in the community as 'the Baptist Church', is based in the west end of Crewe, although it continues to attract members from a wider area of South Cheshire. The church changed its name to West Street Christian Fellowship when it became a charitable company. We are an independent church and a member of the Evangelical Alliance



OUR STRUCTURE

LEARNING FROM WEAVING

We are all weak individuals, but together we are woven together to create something that is much larger, stronger and more beautiful than any of us could be on our own.

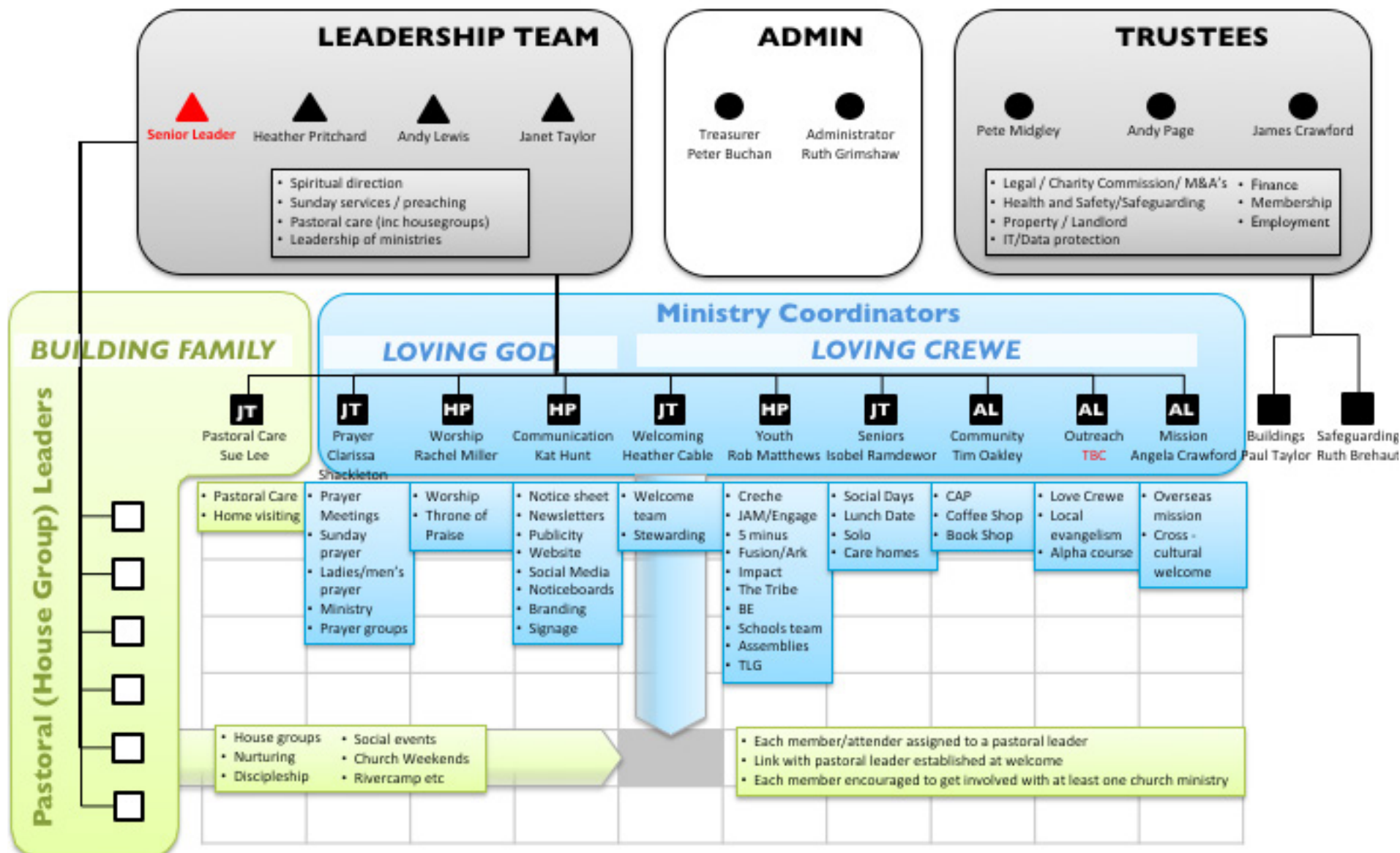
Weaving requires us each to be stretched to support others and bend to their needs.

The warp and the weft are equally important and give us strength – every one of us should have multiple connections and not just be aligned with one group or point of view.



Our structure is inspired by the weaving example, and the following principles:

- Team leadership
- Separate trustee and leader responsibilities
- Leaders appointed for every ministry area
- Pastoral care via housegroups and 1:1 visiting
- Every member and attender woven into the life of the church through connections with pastoral care and church ministries





LEADERSHIP, ADMIN, TRUSTEES

The leadership team is based on a team leadership approach, with the Senior Leader (paid) and volunteer leaders serving alongside each other. The leaders meet weekly and hold spiritual responsibility for the direction of the fellowship, teaching, pastoral care and leadership of the ministries.

The trustees are a separate body who hold the legal responsibility for West Street as a charity, in addition to responsibility for property, safeguarding, health and safety etc. They are also the official employer of the paid staff.

The leaders, trustees and administrators meet monthly to pray and jointly make key decisions that affect the life of the fellowship; close collaboration and communication is key to us working together.

MINISTRY COORDINATORS

Ministry leaders are responsible for the various ministry areas of West Street. They coordinate activities in their area in conjunction with a team who ensure every area is covered.

Each ministry leader has a direct point of contact for communication with the leadership team

PASTORAL LEADERS

House groups are the primary link for pastoral care for nurturing and discipleship. Our housegroups are mostly led by a couple of pastoral leaders.

Our pastoral care requires development to ensure that all who attend the church have support when required, and that a pastoral link is established from first welcome.

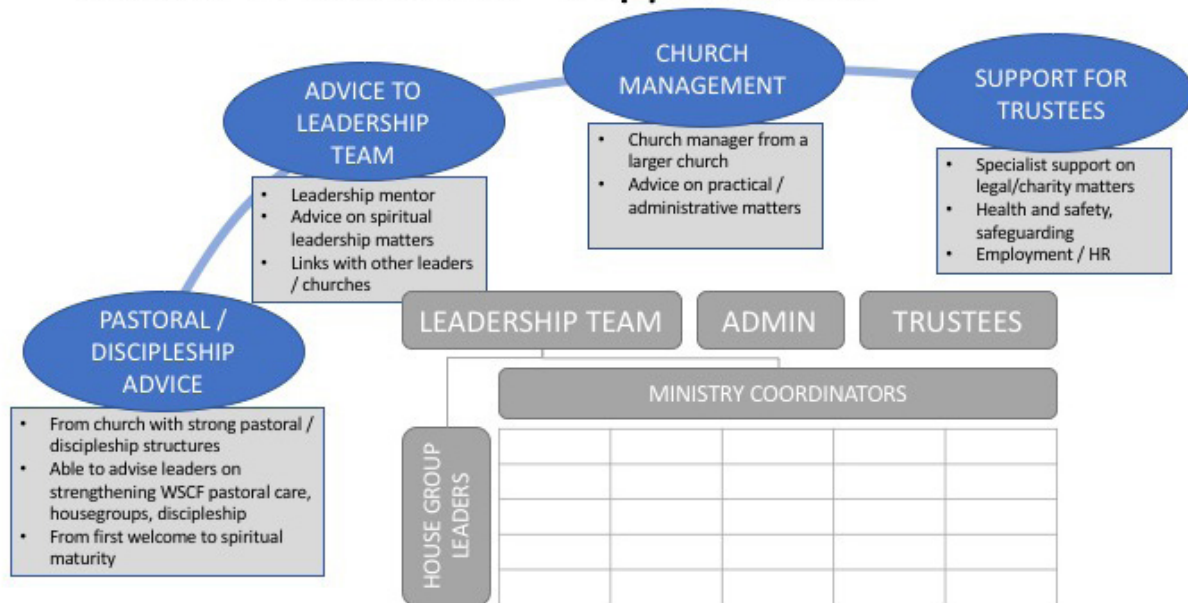
Ministry and pastoral leaders have regular opportunities to meet with the leadership team, both together and separately, for prayer and sharing of priorities and issues together.

COUNCIL OF REFERENCE

A council of reference is currently being established to ensure a suitable support structure exists for the leaders and the trustees. The key areas of focus for the council of reference are on the next page:



Council of Reference – Support Areas



Over the past 2 years the leaders have worked closely with senior leaders with extensive experience and contacts in the Manchester, Cheshire and Stafford areas, in particular:

- David King (Director of Kingdom Voice, Salford, GATHER Movement ambassador in the North of England)
- Robert Mountford (Founder of City Vision Ministries, Stoke-on-Trent. Ecumenical Mission Officer for Staffordshire and Black Country)
- Roger Sutton (Evangelical Alliance England Ambassador, Leader of GATHER Movement)

In the absence of a senior leader David King is currently working part time with West Street to advise the leaders and trustees, assist with staff development. He also preaches with us monthly and helps define the teaching programme. He has agreed to continue supporting us as a member of our council of reference.

MEMBERSHIP AND DECISION MAKING

Membership of the church fellowship is open to anyone who professes a genuine Christian faith, can agree to the church statement of faith and has been baptised by total immersion.

West Street operates a congregational decision making model, where a member vote takes place on key decisions including staff appointments and significant financial outlay.

The current leaders and trustees have worked hard with the members to ensure extensive consultation, involvement and alignment before any vote, so that voting can be used primarily as a confirmation process.

LEGAL STATUS

West Street Christian Fellowship is a registered charity, and also currently a Company Limited by Guarantee.



OUR (PASTORAL) HOUSE GROUPS

House groups form a network from which pastoral care can be initiated. We have a small number of House groups that function by meeting at various times in the week. They largely happen in a home setting which gives a good place to strengthen relationships, enjoy each other's company, share our faith, study the Bible, pray, and have fun – and often food - together.



OUR MINISTRIES

WSCF is a very busy church as people recognise needs in our local community and are encouraged to worship God with the gifts he has given them.

PASTORAL CARE

As stated in our structure model, our pastoral care at present falls under two main categories.

The Pastoral team make emergency visits to those who have immediate needs and to the elderly, sick or bereaved. Sue Lee and Tim Oakley head up a small team who engage with these visits.

PRAYER

It is our desire that prayer becomes our life's breath and is woven into all that we do at WSCF. We have a team to coordinate prayer activities at West Street, including:

- Sunday morning (0930) prayer meetings
- Regular prayer slots in the Sunday services
- Prayer ministry after Sunday services
- Monthly prayer meetings for the congregation to attend.
- In depth 1:1 prayer ministry, including healing & deliverance
- Love Crewe Prayer - for our town with the other Love Crewe congregations

WORSHIP

- **WORSHIP:** We see worship as family...relationship with God, relationship with each other and seeking God together. It's in that place we want to see God move, potential released, people healed, miracles, chains broken, joy expressed, forgiveness and the list continues!! Isaiah 62v10- As we worship we are preparing the way for the people, we are opening up 'the highway' through our praise to Him and clearing a way for God to do what he wants to do.
- **THRONE OF PRAISE:** Once a month, our evening service is dedicated to a time of worship and reflection, allowing space for people to come before God and enjoy His presence.

COMMUNICATION

In our world of ever advancing technology, we have recognised the need for change in the way we communicate to the world. The new Church website is nearing completion, and we have upgraded the look and feel to many publications we produce through the different ministries.

At present, Kat Hunt heads up our communications ministry. Through her expertise in graphic design, Kat has worked hard at improving our interior as well as the continuity in what the community see. There is still much to do!



WELCOMING

Another area of church life that has vastly improved recently is the hosting of our church, particularly on Sunday mornings. A team of volunteers, led by Heather Cable, greets members and visitors as they arrive, has Welcome Packs readily available and provides refreshments before the service.

YOUTH AND YOUNG ADULTS

Under the leadership of various paid and volunteer leaders, we seek to help children and young people meet Jesus and fulfil their God-given potential.

It has been key in building relations with families in our church and in our local community over many years through different groups. Key youth activities include:

PRE-SCHOOL

- **5 MINUS (0-4 years):** Mondays to Thursdays Term time 10.00 – 12.00. 5 Minus is a warm and welcoming place for both under 5s and their parents and carers. Our wonderful team provide a variety of toys, activities, stories and songs for all to enjoy. Refreshments are available for adults; snacks and drinks are provided for the children.
- **JAM TOTS (2-4 yrs):** Term time during 10.30 service. A safe and loving environment where our pre-school children can spend time with God through play, worship, exploration, prayer and stories.

PRIMARY AGE-GROUP

- **FUSION (Primary School Age):** Friday evenings (Term Time) Meeting at 18.30 – 20.00. Fusion is a fantastic place to spend Friday evenings! We begin with time in church. Together we get to know more about God through worship, Bible teaching and prayer. Then we split into different age groups and take part in a whole range of workshops: cooking, sport, craft, lego and many more!
- **THE ARK (Primary Age):** Christmas, Easter & Summer Holidays Daytime. The Ark is a fabulous holiday club that has been running for over 20 years! During the Ark we have church time, including worship, teaching and prayer. Followed by workshops, messy games, joke and talent and a whole lot more!
- **JAM: (Primary Age):** Term time during 10.30 service. At JAM we start with some free play together then have a time of teaching and games. We split into smaller age-appropriate groups where we explore the Bible and what it means for us. It's sometimes messy, sometimes loud but always fun and God-centred
- **SCHOOL'S WORK LOCAL SCHOOLS (Primary Age):** Term Time in local schools. The schools team are involved in teaching RE, leading worship, running lunch time clubs and special assemblies. We also work alongside other churches in Crewe to present Christmas and Easter performances for the local Primary Schools. These are performed in churches around Crewe for the schools to attend
- **TRANSFORMING LIVES FOR GOOD (TLG):** Term time in local schools. We have a brilliant team of volunteer coaches working with the charity TLG. The coaches work in a local primary school offering one to one coaching with specific children.



SECONDARY AGE-GROUP

- **IMPACT (11-18 age):** Tuesday nights Meeting at 19.00 – 21.00, A place to chill with friends, make and eat yummy food, play sports and get creative. We talk about life issues and look at how God is still relevant today. We sometimes get out and about to other events and have an annual weekend away.
- **EN:GAGE (11-16 age):** Term time during 10.30 service, Providing young people with challenging Bible teaching and a space where they can explore their doubts, the relevance of the Gospel and how it can fit to their lives
- **THE TRIBE (Years 7 to 11):** Usually meets first Thursday of the month Meeting at 18.00 – 21.00 We share a meal together, play games and delve into the Bible through discussion and prayer, expectant of God to move amongst us.

YOUNG ADULTS

- **BE (18-30 age):** A space for those who are 18-30ish where we can Be together, Be ourselves and Be with God. We hang out, develop relationships with each other and with God, and enjoy each other's company.

SENIORS

This is a more recent ministry that has grown because of the number of elderly members within the congregation and the growing population in our community. Seniors activities include:

- **SENIORS CURLING, BOCCIA & COFFEE:** First Friday of every month 10.30 to 12:00 noon Meet with friends to compete in games or just enjoy a chat and coffee. In Christian Centre next to the Church, on Richard Street.
- **SENIORS' SOCIAL DAYS:** Open to all over 60 years of age from our local community, it includes a free lunch, games, and quiz and craft activities. We also include light physical exercise, manicures, massage and some musical activities.
- **LUNCH DATE:** Meets alternate Wednesdays during school terms, 12.15 to 2.30pm. Open to all but tends to be 40 – 100 age group. We meet for lunch (£3.50), fellowship and talks on various topics.
- **SOLO:** Meets together at a local restaurant, usually on the first Sunday of each month. For anyone who would be eating alone and would like to join others for lunch.
- **CARE HOMES:** Pickmere Rose Terrace is a residential home about half a mile from the church, offering independent living for older people, with 85 flats and on-site facilities including a care team, bistro, hair salon and a range of social activities. When it opened in 2011, a member of the church was one of the first residents and she had the vision for a regular Christian service there. On a Thursday afternoon each month we have 'Sofa Church', as a result of her initiatives at that time. It's a short informal service where we sing some well known hymns, pray and have a short message, followed by tea and biscuits and a time to chat. The numbers vary, but we have about 8 residents who come as often as they can.



COMMUNITY

- **CHRISTIANS AGAINST POVERTY:** Here at WSCF we run a thriving CAP Debt Centre, employing 2 Debt Coaches and a CAP Money Coach. We are currently running at 100% capacity, with our diaries booked up for 2-3 months in advance and delivering 5-6 Money courses each year.
Last year we saw 16 families become debt free but many others also experiencing hope in their lives, whether financially or spiritually! CAP is a wonderful expression of God's love in action; meeting people in their own homes who are struggling and bringing them hope.
- **COFFEE SHOP:** Within The Maybury Centre base we have the facilities to host private meetings in our coffee lounge. This is a great space for the community to hold meetings in a more relaxed environment.
- **BOOK SHOP:** The bookshop is located in the reception area of the Maybury Centre. There is a range of Christian literature available including Bibles, cards for different occasions and small gifts available for purchase.

OUTREACH

Much of our outreach is done in connection with 'Love Crewe'. We see outreach as a combination of practical expressions of love for our town and street evangelism. Following these events we have joined together with other churches in the town to run a number of Alpha courses.

MISSION

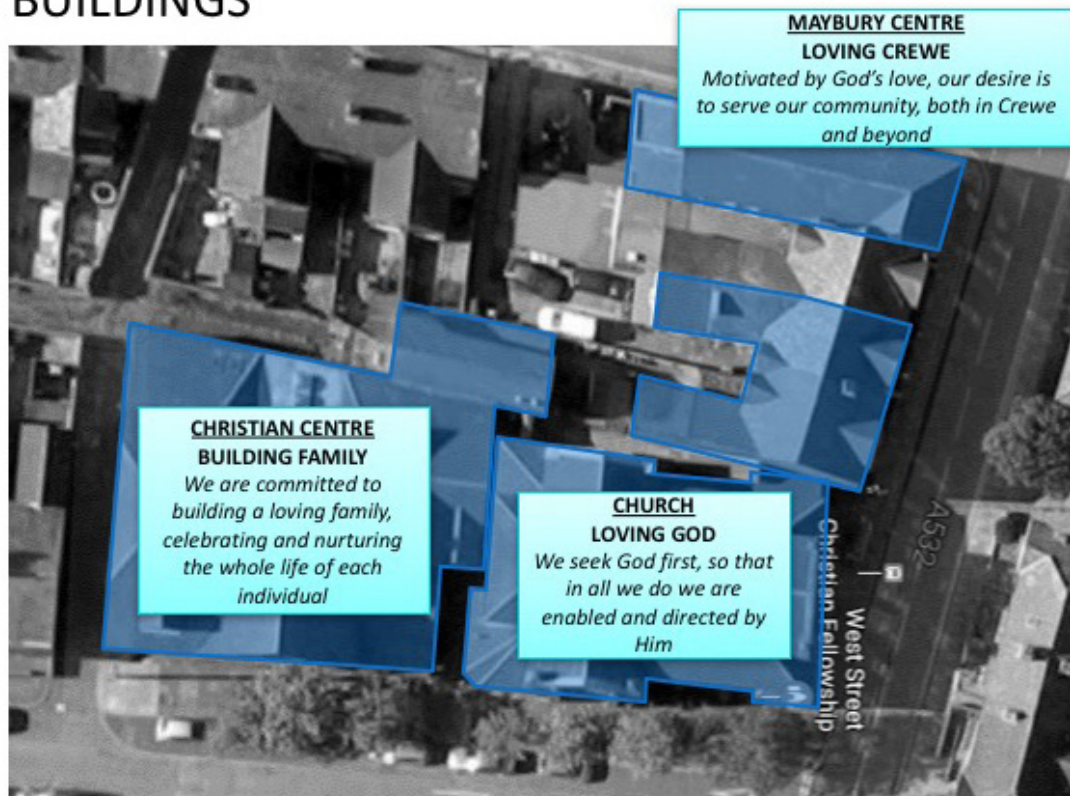
- **OVERSEAS MISSION:** We have three overseas and one UK-based missionary that we support prayerfully and financially. In addition, within West Street we have very active founding members of two key charities with impact in Africa: Africa Christian Teaching Services (ACTS) and Flame International. Mission is a key area for our fellowship. As well as dedicating 10% of our annual budget to mission, we actively promote overseas mission opportunities, both long and short term with the aim of encouraging all age groups to be involved.
- **CROSS-CULTURAL WELCOME:** We are a congregation that welcome people from all nationalities. We are blessed to have a number of folk from different countries that have made Crewe their home. Our desire is to become even better at celebrating the cross-cultural diversity represented at WSCF.



BUILDINGS

West Street currently owns a large amount of property in the West end of Crewe, specifically:

WSCF BUILDINGS



- **CHURCH BUILDINGS:** primary focus – LOVING GOD – Sunday services etc
- **CHRISTIAN CENTRE:** primary focus – BUILDING FAMILY – used primarily for children and youthwork
- **MAYBURY CENTRE:** Maybury Centre – primary focus – LOVING CREWE – a base for our offices including CAP, TLG, schools workers and coffee shop
- **TWO SHOPS WITH FLATS ABOVE:** these are currently rented out to and provide income including: YMCA for community use, a nursery, a local shop

SAFEGUARDING

We have a small team that takes care of safeguarding at West Street. All of our key workers are DBS checked and it is a high priority for us to keep all children and vulnerable adults safe, whether they be part of our church family or our local community.